



RHENUS LOGISTICS B.V.: 1.700 METERS OF LAYBY QUAY IN ROTTERDAM

Although part of the international Rhenus Logistics group of companies, Rhenus Logistics B.V. in Rotterdam is an **independent** breakbulk & heavy lift port terminal operator (stevedore).

We work for ship-owners, shipping agents, brokers, breakbulk & heavy lift shipping companies, general & project cargo forwarders, steel & metal traders, OEM producers & manufacturers, EPC(I) contractors and on- and offshore oil & gas and renewable energy companies.

Our two deep sea terminals with heavy cranes function as a cargo hub for the handling and storage of breakbulk cargoes as well as a service hub to the shipping & offshore industry:

Key figures:

- 2 terminals
- 1.700 meter of quay
- Waterdepths 10,00 – 16,50 meter
- Max lift single lift capacity 125MT, twinlift 187,5MT

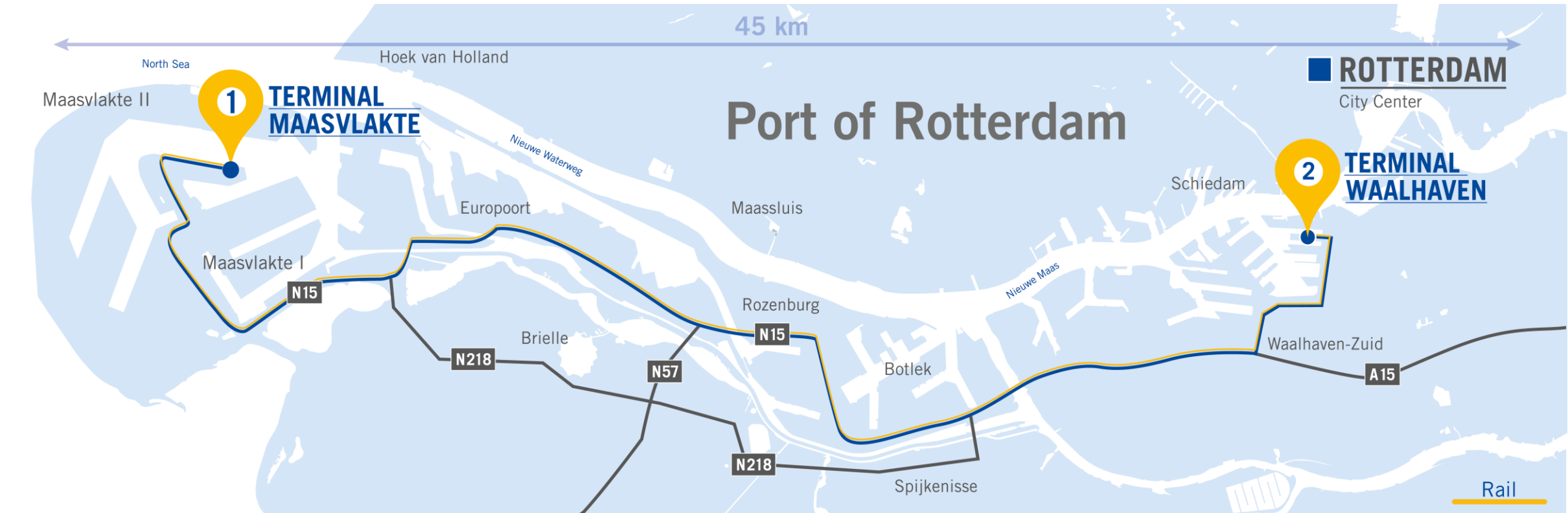
AGENCY

Rhenus is a Top 10 shipping agent in Rotterdam

- Services in all Dutch ports
- Tramp and liner agency services 24/7
- Arranging berth, pilotage, lay-by/lay-up facility
- Quick, accurate and detailed PDA
- On-Off hire, ship sale, warm & cold layby assistance
- Mobilization / demobilization support
- Charterers representation / owners representation
- Crew repatriation
- General husbandry / provision supplying
- Bunkering service
- Clearance and delivery of ships spares
- Communications:
 - (24/7 phone) +31 (0)10 4400 427
 - agency@nl.rhenus.com



OWN LOCATIONS IN ROTTERDAM



1 RHENUS DEEP SEA TERMINAL

- 207,000 sqm total area CCTV secured
- 70,000 sqm covered bonded warehouses
- 137,000 sqm open storage area
- 4 harbor mobile cranes, max 187,5 mt lift.cap.
- 500-meter quay maximum draft of 16.50 meters
- 275-meter quay maximum draft of 11.65 meters
- 400 meters double (landside) rail track

2 RHENUS WAALHAVEN TERMINAL

- 65,000 sqm total area CCTV secured
- 21,000 sqm covered bonded warehouses
- 44,000 sqm open storage area
- 5 breakbulk cranes max 38.5 mt lift.cap.
- 900-meter quay maximum draft of 10.20 meters
- 550 meters double (waterside) rail track
- Unhampered nautical accessibility, no locks or bridges

LAYBY

Float in / out



FPSO towage prep



Semi-sub



Offshore



Breakbulk & Heavylift



Coasters



Dredging & Cables

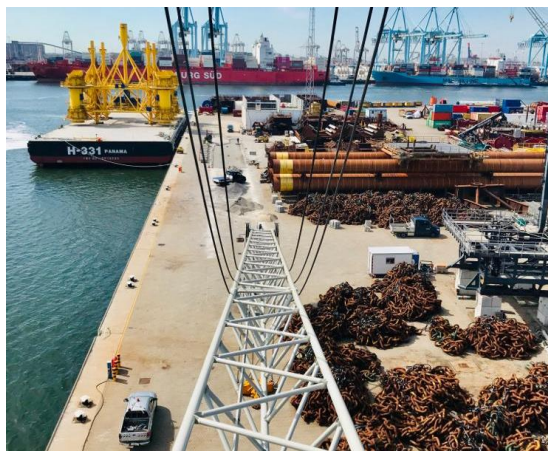


Army



LAYBY

Pontoons



Jack-ups (restricted)



Installation of Scrubbers



Dry bulk board/board



PSV's



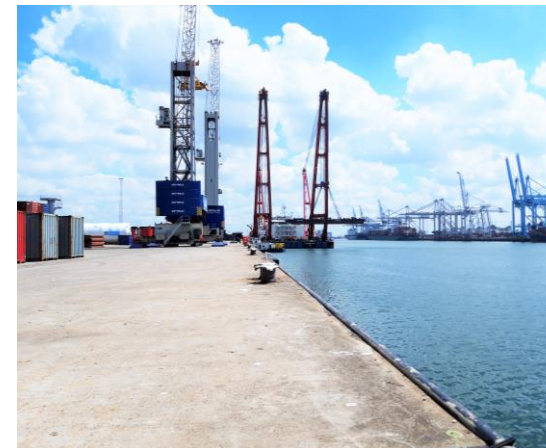
Load testing



Special project assistance



Shearing cables assistance



SHIPPING LINES

Rhenus Logistics functions as Rotterdam carriers berth for:

- BBC Chartering: global services
- Compass: Canada – Rotterdam – Canada
- Nirint Shipping: Rotterdam – Bilbao - Carribs / Cuba – Canada – Rotterdam
- Rulewave: Rotterdam – Nigeria
- Longship: Atlantic

Rhenus Logistics has regular calls by:

- Cosco Shipping (breakbulk) – Asia
- Spliethoff: Global
- G2 Ocean: Global
- Saga Welco: Canada - NWE
- RMS: shortsea Europe
- Arkon Shipping: MED / ScanBaltic / NWE
- Wagenborg Shipping: ECUSA - NWE
- Schulte & Bruns: Rotterdam – NWE / MED / Turkey



CONTACT DETAILS

Rhenus Logistics B.V.

Stefan Venema

Head of Maritime & Agency

Rhenus Logistics B.V.; Kesterenstraat 21

3087 BB Rotterdam, The Netherlands

Tel: +31 (0) 10 4400 428

Mob: +31 (0)6 100 404 82

stefan.venema@nl.rhenus.com;

