

# ROTTERDAM PROJECT CARGO HUB

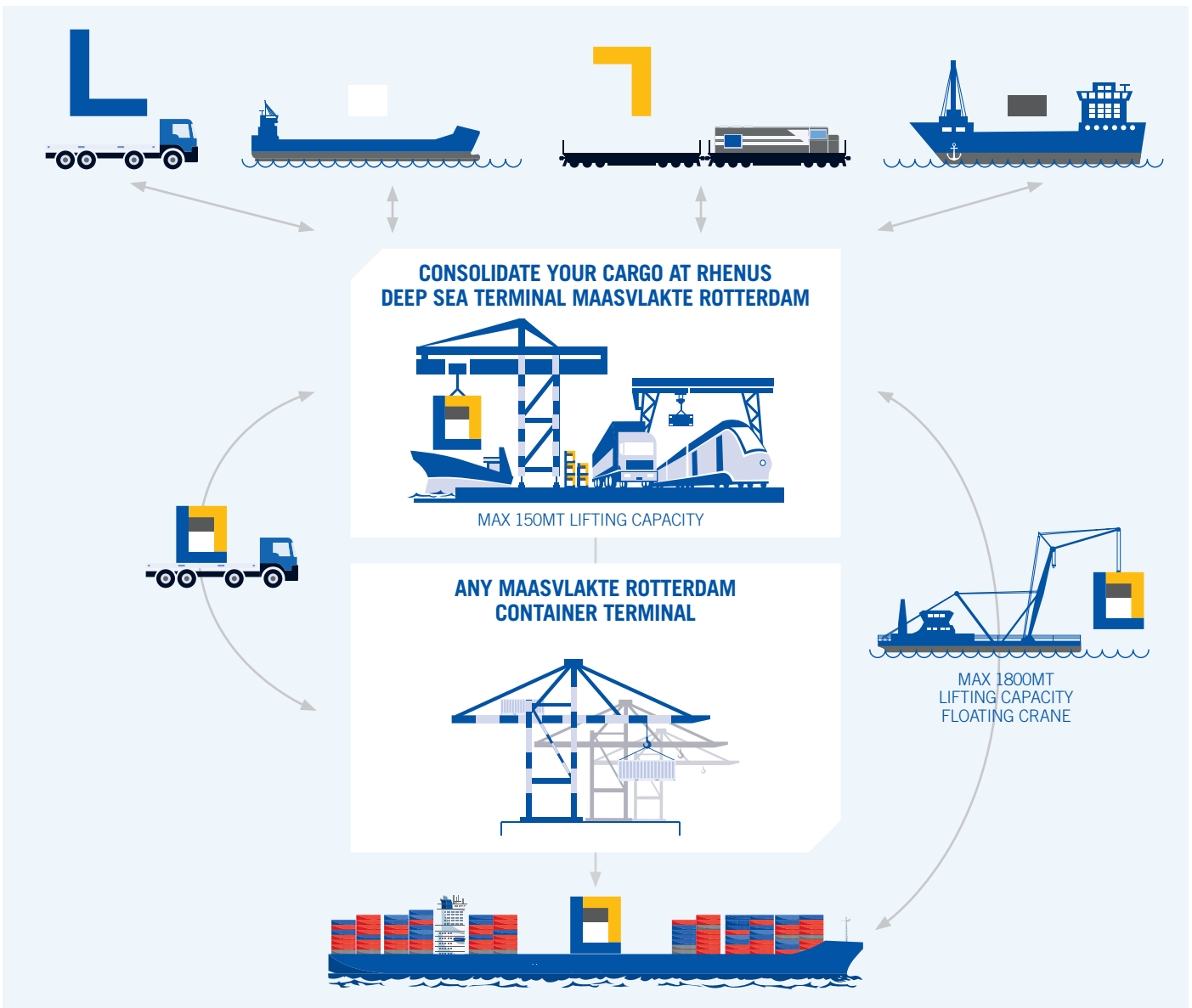
## “CONNECTING YOUR BREAKBULK CARGO WITH CONTAINER LINER VESSELS”



Break bulk & heavy lift terminal operator Rhenus Logistics B.V. in Rotterdam lies in the middle of all major container terminals at the Rotterdam-Maasvlakte area. With no height, width or draft restrictions situated directly at the North Sea the Rhenus Deep Sea Terminal ensures a smooth transition of your heavylift pieces on any container vessel.

The unique amount of heavy floating cranes in Rotterdam facilitate lifts of any size and weight onto container vessels. This way the Rhenus Rotterdam Project Cargo Hub gives you the advantages of using the regularity of container liner services without the operational struggle when handling your Out Of Gauge and Heavy Lift cargoes.





The location of the Rhenus Deep Sea Terminal (RDST) functions as a breakbulk turning table as it lies right in the middle of all major container terminals such as Rotterdam World Gateway (RWG), APMT 1 & 2, Euromax and ECT all located at the Rotterdam Maasvlakte.

At the RDST we consolidate breakbulk cargo waiting to be shipped with a container liner vessel. Also import project cargoes & heavy lift cargoes can be stored here waiting to be picked up by ship, barge, rail or truck:



- RDST is the closest by break bulk & heavy lift terminal
- Suitable for train, truck, barge and ships
- 800 meter quay with water depths from 11,65 – 16,50 meters
- 210.000sqm of which 70.000sqm covered
- 3 harbour mobile cranes (100/100/125 MT max twinlift of 150MT)
- Tailor-made handling solutions for:
  - ➔ cargo longer than 17 meter
  - ➔ higher than 4 meters
  - ➔ or heavier than 65 metric tons
- RDST is the hook-on/off terminal for deliveries with floating crane via water
- Unique fleet of heavy lift floating cranes with max lift cap of 1800 MT

**FOR MORE DETAILS PLEASE CONTACT:**

Sander Klapwijk  
 Head of Sales  
 Rhenus Logistics B.V.  
 Antarcticaweg 199; 3199 KA Rotterdam / Maasvlakte  
 The Netherlands

Tel: +31 (0)10 44 00 467  
 Mob: +31 (0) 61 70 68207  
 sander.klapwijk@nl.rhenus.com  
 www.projectcargorotterdam.com/  
 Terminal port # 8229 – 8238